



NASSAU COUNTY BOARD OF COUNTY COMMISSIONERS  
**DEPARTMENT OF PUBLIC SAFETY**

911 COORDINATOR  
 50 Bobby Moore Circle  
 P. O. Box 596  
 Yulee, Florida 32041



Resolution Number - 98-78

**WHEREAS**, the Board of County Commissioners of Nassau County, Florida did establish Ordinance Number 92-14 providing for a process of naming and renaming streets in Nassau County, and

**WHEREAS**, the majority of citizens of Nassau County currently residing on **“an unnamed easement which extends south off East State Road 200”**; located in Section 50; Township 3N; Range 27; have requested the street be named **“CHRISTIAN LANE”**; and

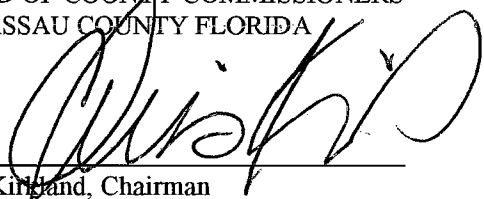
**WHEREAS**, the residents understand that they must pay for the construction and placement of new street signs reflecting this change, and

**WHEREAS**, the 911 Coordinator’s Office has reviewed the request in accordance with Ordinance Number 92-14, and has verified the request as acceptable and not in conflict with names already assigned, and

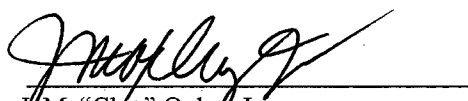
**WHEREAS**, the 911 Coordinator’s office has forwarded the request to the Board of County Commissioners for consideration, now

**THEREFORE, LET IT BE RESOLVED**; this 13<sup>th</sup> Day of April, 1998, that the street currently known as **the unnamed easement which extends south off East State Road 200** in Nassau County, Florida be hereafter referred to and known as **Christian Lane** in Nassau County, Florida, and the County Engineer shall be authorized to erect any and all necessary signs indicating said name.

BOARD OF COUNTY COMMISSIONERS  
 OF NASSAU COUNTY FLORIDA

  
 \_\_\_\_\_  
 Chris Kingland, Chairman

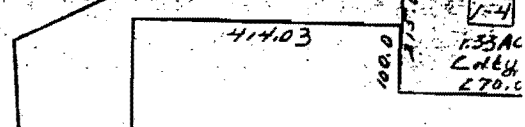
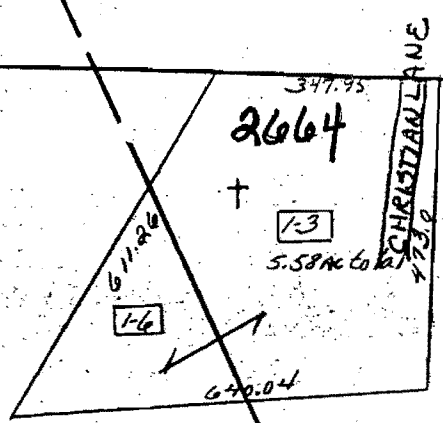
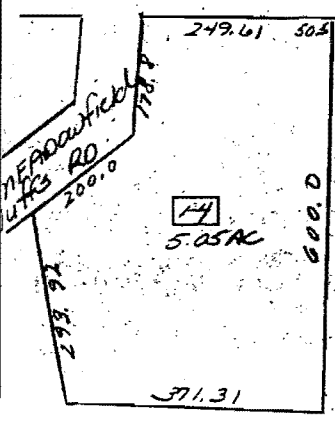
ATTEST:

  
 \_\_\_\_\_  
 J.M. “Chip” Oxley, Jr.  
 Ex-Officio Clerk

05.5 AC

GENE LASSERRE BLVD

1200



1-5  
71.45  
CITY



241.65

TOTL  
LAT